



Checkpoints

VIRGINIA MOTOR SPORT CLUB

VOLUME 31 No. 2

FEBRUARY 1986

FEBRUARY

1
2 3 4 5 6 7 8
9 10 11 12 13 14 15
16 17 18 19 20 21 22
23 24 25 26 27 28

MARCH

1
2 3 4 5 6 7 8
9 10 11 12 13 14 15
16 17 18 19 20 21 22
23 24 25 26 27 28 29
30 31

- FEB. 20 - REGULAR CLUB MEETING AT LA SIESTA RESTAURANT. THE SCRAPBOOK WILL BE THERE SO COME AND CATCH UP.
- FEB. 22 - "BILL'S BARBQ RALLY". YOU GET 600 PARTICIPATION POINTS IF YOU WORK OR RUN. IT SHOULD BE FUN. SEE FLYER.
- MAR. 1 - COVERED DISH DINNER AT JOHN AND SUE ADAMS. CALL SUE FOR DETAILS.
- MAR. 6 - BOARD MEETING
- MAR. 9 - WINTER SERIES 3 AUTOCROSS. BEACHCOMBERS CORVETTE CLUB. CALL JOHN CREED AT 427-6431 FOR DETAILS.
- MAR. 20 - REGULAR CLUB MEETING AT LA SIESTA.
- MAR. 23 - PRACTICE AUTOCROSS AT AJD. NO POINTS, NO TROPHIES, JUST A WARMUP FOR A HOT SEASON. SEE FLYER.
- APR. 3 - BOARD MEETING.

SCHEDULE

New Members

- WES TUTWILER - WES IS AN OLD MEMBER COME BACK AROUND. HE WORKS AT WEST BROAD HONDA AND DRIVES A '73 HONDA CIVIC. WE KNOW HE IS INTERESTED IN ALL PHASES OF VMSC. 740-0084
- FRANK MERKEL - ANOTHER FORMER MEMBER RE-NEWED. FRANK WORKS AT VA. POWER AS AN ACCOUNTANT. HE DRIVES A 1985 FIERO, 1972 MUSTANG, AND A 1980 KAWASAKI. WE REMEMBER FRANK AS A RALLYIST AND ARE GLAD TO HAVE HIM BACK. 740-0427
- SANDY POOLE - SANDY IS A GENUINE NEW MEMBER. SHE IS A TEACHER IN DINWIDDIE CO. SHE DRIVES A 1978 TOYOTA AND IS INTERESTED IN RALLYING AND SOCIALS. SHE IS ALSO THE FIANCÉE TO GERRY EBERHARD. MUCH LUCK. 745-2572
- MIKE HARTMAN - THIS IS A SINGLE MEMBERSHIP BUT MIKE IS MARRIED TO LINDA. MIKE WORKS AT PHILIP MORRIS AS AN ENGINEER. HE DRIVES A 1980 TR-7 AND A 1985 CAVALIER. HE IS INTERESTED IN RALLYING AND SOCIALS. WE SAW MIKE AND LINDA AT THE BANQUET. GOOD TO HAVE YOU IN THE FLOCK. SEE IF YOU CAN GET LINDA TO JOIN. 541-3442
- WAYNE TILLEY - THIS IS A SINGLE MEMBERSHIP OF A MARRIED PERSON TOO. WAYNE IS SELF EMPLOYED AS A DYE SPECIALIST. HIS WIFE'S NAME IS WANDA AND THEIR DAUGHTER IS NAMED VANDA. WAYNE DRIVES CORVETTES MOSTLY (1969, 1973, 1980) AND A 1985 CHEVY VAN. HE IS A MEMBER OF THE CORVETTE CLUB OF RICHMOND, AND IS INTERESTED IN AUTOCROSSING. WELCOME. 746-2990
- JIM AND CAROLYN HIGGINBOTHAM - A FAMILY MEMBERSHIP AT LAST. THESE TWO ARE BOTH MINISTERS AT SPRINGFIELD CHRISTIAN CHURCH. THEY RUN A 1985 NISSAN SENTRA AND A 1979 DODGE OMNI. THEY ARE INTERESTED IN SOCIALS AND RALLYING. THESE TWO WERE AT THE BANQUET AND WE COULDN'T KEEP THEM OFF THE DANCE FLOOR. WELCOME TO THE CONGREGATION (OUCH). 749-4182
- LOIS HOFSTRA AND EARL ROGERS - ANOTHER FAMILY MEMBERSHIP. LOIS IS MANAGER AT ROBERT RENTZ INTERIORS AND EARL IS A PHARMACIST AT THE V.A. MED. CENTER. THEY DRIVE A 1976 CHRYSLER, A 1984 RX-7, AND A 1972 TOYOTA. MANY WELCOMES. 794-9541

1986 COMPETITION COMMITTEES

AUTOCROSS COMMITTEE

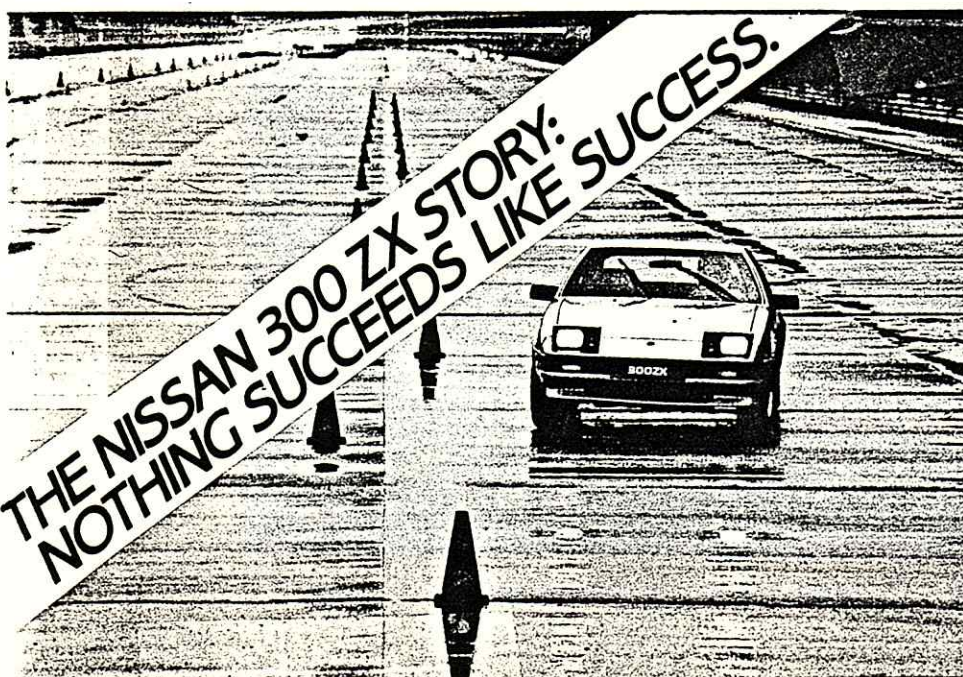
CHAIRMAN - BILL HUNTER
MEMBERS - DOUG BURTON
JET BURTON
FLOYD MILLS
DENNIS WEIR

RALLY COMMITTEE

CHAIRMAN - BILL HUNTER
MEMBERS - JOHN ADAMS
NEALE DICKINSON
BETH MILLS
MARVIN MILLS
GARY STOUT

YOU KNOW YOU'VE GOT A LAND YACHT WHEN....

-the valve cover says "powered by Evinrude".
-a foghorn is listed as standard equipment.
-on long trips your passengers come down with scurvy.
-your neighbors refer to your driveway as "the marina".
-the glovebox has a dramamine dispenser.
-your speedometer is graduated in knots.
-the salesman slips and calls the steering wheel the helm.
-people flash their lights to let you know you've completed passing them.
-the turn signals are marked port and starboard.
-you realize that they call it a "Town Car" because it could hold a town.
-the crew mutinies.
-you start ordering grog at your favorite restaurant.
-travel agents keep asking for sailing dates.
-you say the trunk is astern.
-your wife forgets her boarding pass.
-your Saturday golf foursome shows up with bait and tackle.



THE PERFORMANCE PEOPLE
BOULEVARD
IMPORT
DATSUN * SAAB
7903 W. Broad VA DEALER 302 270-4700

CENTRAL
VIRGINIA'S
LARGEST
DATSUN
DEALER

1986 FINANCE COMMITTEE
CHAIRMAN - JET BURTON
MEMBERS - CHRISTIE BEAM
WARREN BEAM
NEALE DICKINSON
SCOTT POWELL

**COMING
SOON !!**

Gomer Formbie's new book



"POWER TUNING YOUR FURNITURE"

BILL'S
BASIC
AMATEUR
RALLY &
BUBBLEGUM
QUEST

Rallymasters
BILL HUNTER
GARY STOUT



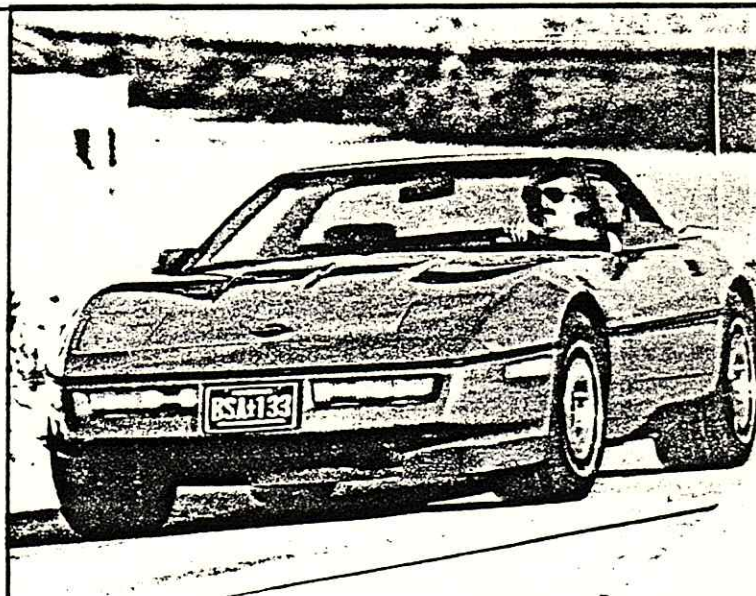
Saturday, February 22, 1986----Registration from 11:30 to 12:15 with FCO 12:31. Starts at the Fringe Commuter Parking Lot on Parham Rd. just south of I-64. Ends with a keg and games party at 1214 Santa Rosa Rd. (there will be a hotline to Dominos available). Mixers will be provided.

A very easy rally geared to the novice and beginner.... Cost is \$10.00..... No more than one VMSC member per car.

Preregistration and information from:
Bill 804-883-6557
Gary 804-288-0174

More Fun.
Less Money.

Dominion Chevrolet.



BOTANAS (Appetizers) NACHOS

Crispy corn tortilla chips, smothered in melted cheese, the filling of your choice, and topped with sliced jalapeño peppers. Try these with our tasty complimentary sauces!

Choose From	
Chips & Cheese	2.75
Bean & Cheese	2.95
Beef & Cheese	2.95
Beans, Chicken & Cheese	3.50

Mexican Pizza
Mama, mia, that's Mexican! We take a crisp tortilla and top it with spicy tomato sauce, sliced jalapeños, melted cheese and beef. A MexTalia Original! 3.25

Guacamole
Our own personal concoction of fresh crushed avocados, fresh tomatoes, onions and homegrown Mexican herbs. Served with tortilla chips for dipping. (Served only when avocados are at their peak.) 2.45

Amelita Dip
This is a superb sour cream dip, served with tortilla chips. Can you guess our secret ingredients? 2.45

Chili Con Queso
The Swiss can learn something about fondue from our version of cheese and special sauces, and, of course, served with tortilla chips. Incredible! 2.75

Mini-Mexican Sampler
A plate full of mini Tacos, Tostadas and Taquitos. The same delicious ingredients as our regular size items, only in miniature for two finger nibbling. \$5.95

TACOS

How to Eat a Taco:
Tip one and forward your mouth and curl your little finger around the other end so no goodies fall out!

Tacos
Two beef filled crispy tortillas (or soft, if you prefer them 100% Mexican), topped with fresh lettuce, tomatoes and grated cheese. 3.50

Tacos Al Carbon
Two soft tortillas folded around succulent slices of broiled tenderloin steak, wrapped in melted cheese and served with a panucho basket of refried beans, Guacamole and Amelita Dip. For this dish, our hot sauce is a Must! 5.95

Taquitos
Three crisp corn tortillas stuffed with chicken and topped with our savory sauce and melted cheese. A Mexican favorite! 4.75

(All dishes served with rice and beans.)

PLATOS MEXICANO

Beef Enchiladas
Three tortillas overfilled with beef, our special enchilada sauce, topped with fresh lettuce, tomatoes and cheese 4.95

Cheese Enchiladas
They will put a smile on your face. Say cheese! 4.75

Chicken Enchiladas
Worth crowing about—you'll love it! 4.95

Combinaciones
Can't decide? This is it. One beef, one chicken, one cheese 5.25

Enchilada Suiza
Spiced chicken and our delightful sour cream suiza sauce 5.50

Super Enchilada
GO FOR IT! Fine beef, fresh spices, wrapped in a flour tortilla and all the works. Muy bien. 4.95

Super Burrito
A soft, piping hot flour tortilla filled to the brim with beef and beans and smothered in our tangy sauce and melted cheese. Magnifico! 4.95

Michelita
This is a house specialty! A soft, piping hot flour tortilla stuffed with beef, beans and rice. Then we cover it with two special sauces and top it with melted cheese. 5.25

Chili Relleno
A large, fresh chili pepper stuffed with spicy beef and a tangy blend of cheeses, then dipped in egg batter and fried till golden. Covered in our special red sauce and served with rice and beans 5.95

Carne Tampiqueña
Jose Loredo invented this dish in 1930 and we brought it to Richmond. Carne tampiqueña is a thin slab of beef tenderloin with sautéed onions and peppers, served with beef enchilada, rice, beans and guacamole 6.50

Chimichanga
A Mary Poppins word for a Mexican delicacy. Shredded roast beef cooked with onions, olives and spices, wrapped in a large flour tortilla and topped with sour cream and guacamole 6.25

Zacatecana
A version of Mexican boneless ribs smothered in our savory sauce and covered with melted cheese 4.50

Mexican Dwell
Half a super burrito and half a super enchilada. Have a showdown for your taste buds 5.50

Vegetarian Plate
A cheese enchilada, burrito, and a bean taco, served with rice and beans. Most other items on menu are also available as a vegetarian dish 4.95

(All dishes served with rice and beans.)

COMBINACION (Decisions, decisions!)

La Mexicana
For those of you who can't decide, we've put it all together for you. One taco, one burrito, and one enchilada, garnished with fresh crisp lettuce, diced tomatoes and cheese 5.45

Matambre
We call this our La Siesta Special. One taco, one tostada, one beef enchilada, one burrito and guacamole, served with refried beans and Mexican rice. Eat hearty! 6.45

Dinner for Two
Share in the fun with a great deal on a great meal for two. Start with a 46 oz. Margarita Grande and guacamole. Then share a taco, panucho, burrito, taquitos, chimichanga, enchilada, enchilada suiza, rice and beans and finish with sopapillas for dessert! 19.95

Mix and Match...Be Daring!
Make your own delicious combination from the listing below.

Taco	Taquito	Quesadilla
Tostada	Chimichanga	Flauta
Enchilada	Enchilada Suiza	Burrito
Burrito		

Pick any two just 4.75

Pick any three just 5.95

Pick any four just 6.95

All combinaciones served with Mexican rice and refried beans.

ENSALADAS

Taco Salad 2.95

Ensalada en Concho
Salad in a basket...a flour tortilla basket filled with lettuce, tomatoes, ham and cheese and served with our special house dressing 3.95

Tossed Salad 1.25

SIDE ORDERS

Mexican Rice...75 Refried Beans...75 French Fries...75
Guacamole...95 Sour Cream...75 Jalapeño Peppers...15
Flour Tortilla...50 Corn Tortilla...15

(Extra plate...\$1.25)

(All orders available for take-out.)

(Banquet facilities for 10 to 300 available.)

ALA CARTE

Burrito
This is a filled flour burrito smothered in our own special sauce and topped with melted cheese 1.85

Chili Con Carne
Papa's famous chili with spicy beef and beans 1.50

Panucho
A crispy basket shaped tortilla filled with beef & beans, layered with lettuce, tomatoes, cheese and guacamole. Truly a work of art! 4.95

PLATOS AMERICANO

New York Strip Steak
A juicy, tender N.Y. strip steak, cooked to order and served with fresh garden salad and french fries 7.45

Hamburger
Our thick, juicy ground beef, cooked to order and served with fresh lettuce, tomatoes and french fries 3.50

Mexican Burger
A little adventurous! Our thick, juicy hamburger covered with chili and melted cheese. Served with french fries. What a burger! 3.95

Fried chicken dinner with french fries and tossed salad 5.95

PARA LOS NINOS

Taco and French Fries 2.25

Hamburger and French Fries 2.25

Mexicano Chico
1 small Taco, Tostada and Taquito with rice and beans \$2.75

BEVERAGES

Millk, Iced Tea and Soft Drink (Coke, Tab and Sprite) \$5

Coffee, Hot Tea \$5

I'M OKAY, YOU'RE OFF-COURSE by Gary Stout

Now that I've begun my "retirement" (don't tell Floyd) and am free from the crush of monthly deadlines, I find myself with some spare time to write. Since my memoirs would be more suited as a panacea for the insomniac, I'll turn my efforts toward a possibly enlightened discourse on rallying: the how-tos; the when-tos; and the what-tos. Though in no way complete and with no guarantee of success offered, it might prove helpful to the novice, the I'd rally-but-I'm-not-making-a-fool-of-myselfist, and perhaps even an occasional experienced rallyist. The general purpose is to make people less timid about competing and to point out areas that, when improved or corrected, could make the sport more enjoyable to the more knowledgeable (of course, speaking for myself, I just love getting my teeth kicked in every month).

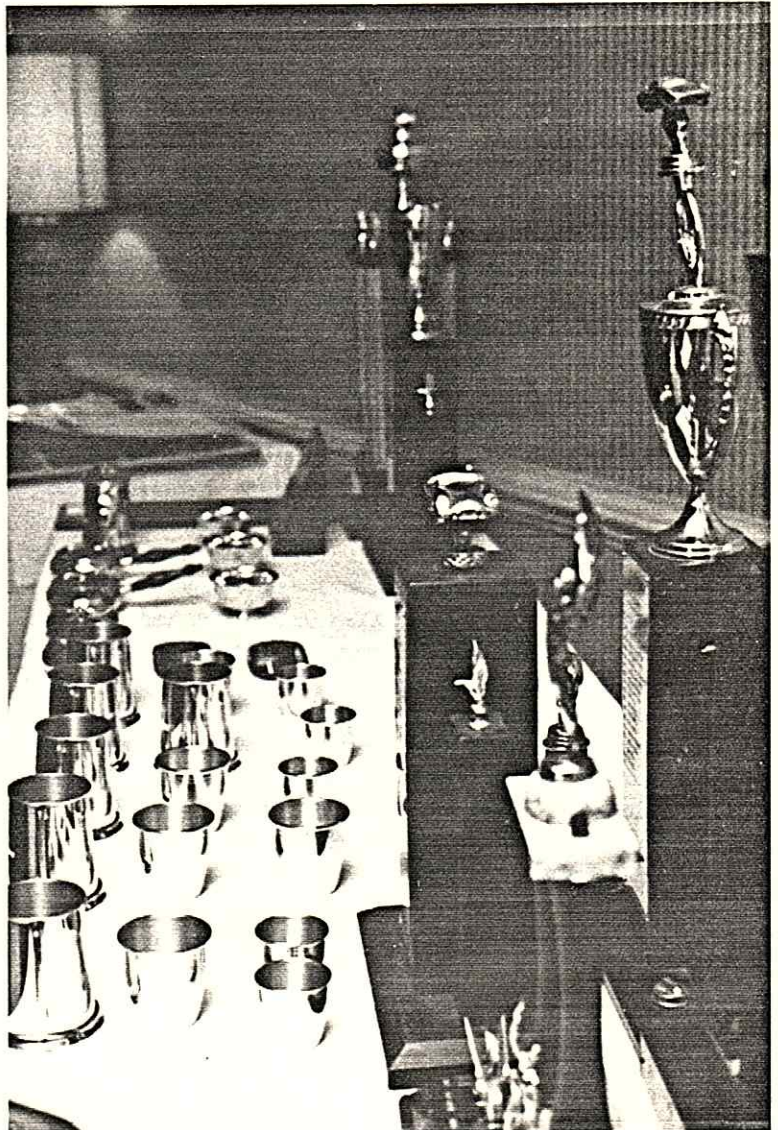
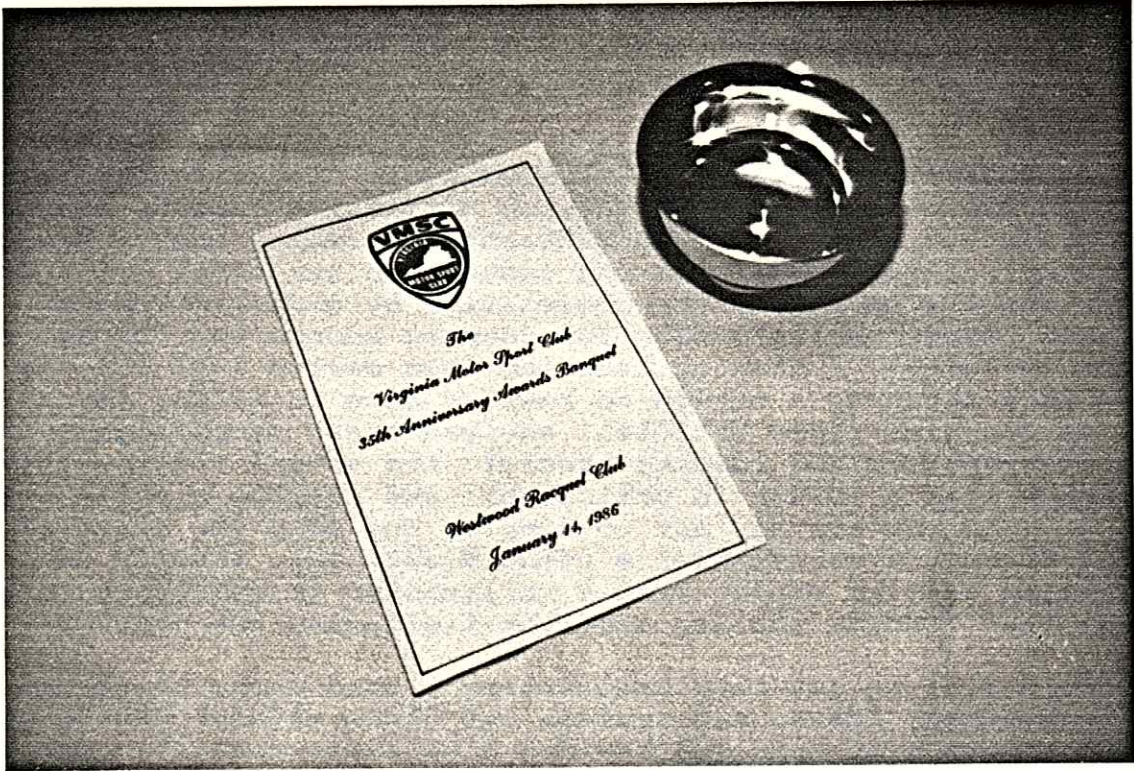
Rallying is a sort of subliminal sport, even cerebral- a mind game with subtle nuances; you (and everyone else, for that matter) pitted against the rallymaster. To create an analogy, it's the

automotive equivalent of golf. Everyone plays the same predetermined course with built-in hazards of varying difficulty (and no course is ever truly the same). The contestants are really unsure how the competition is faring until the end (sometimes the break but there are those who try to psyche the competition by giving erroneous scores -see "Gamesmanship") when you compare scores and low score wins (par is zero). I plan on breaking this series into five parts (it pays more that way - enough to keep my cats in litter for a year) : an overview (this article); equipment and preparation; the General Instructions and reading thereof; the actual rally - this will be more like a lesson in philosophy; and staging a rally - not so much to show you how to, but to display and make you aware of what goes through a rallymaster's often diabolical, usually devious, mind (knowing what to expect from a rallymaster is sometimes more important than finding the big send-the-field-down-the-crapper-trap).

I don't plan to get into calculating - Lord knows there are enough techniques, ideas, and systems out there without having me muddy the waters even more and besides I've never done it - the blind leading the blind. The best approach for a novice is rather simple-run 3 mph over the given speed and learn to STAY ON COURSE! In the mean time, learn what the generals really say and mean and how to apply them on the day of the event. By staying on course, I don't mean finding all the controls by banging off YFU signs (off-course-markers to the uninitiated - placed by the rallymaster as a last resort to keep you from winding up in Durham). If you find the controls by following the Route Instructions, then you're doing it properly. Even if you should fall for "traps" (intended course following problems with only one correct solution) but reach the checkpoints by following the off-course loops, for the novice, this is the same as following the course. Biting a trap is part of the learning process - find out what was really intended to happen and file it in your memory banks - rallymasters, as a breed, are not all that creative and, chances are, you'll see it again or at least a permutation of it. And while you're running the rally, take solace in the fact that most of the other novices (the people you're competing against) have probably taken their lumps on it, too.

When your feel ready (or obligated - some people don't believe in common sense) to calculate, you should talk to an experienced un-equipped navigator to gain some insight into the various means by which calculating can be done and the possible pitfalls and problems that can (will is probably more accurate) occur. You should start calculating on an easy rally, one that you have a degree of certainty of reaching the finish (without a map) if you become bogged down or the driver starts muttering words that sound vaguely like "divorce" or "justifiable homicide". View calculating as if it were a wine - don't use it until it's time. If you approach each rally as a new learning experience, building one upon the other, you'll know when you're ready.

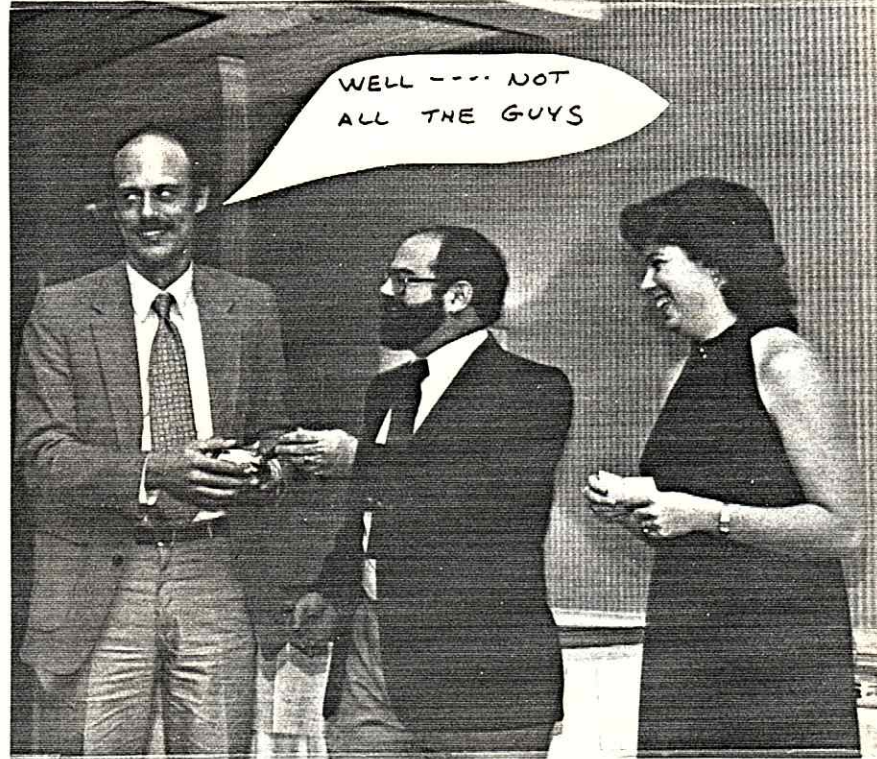
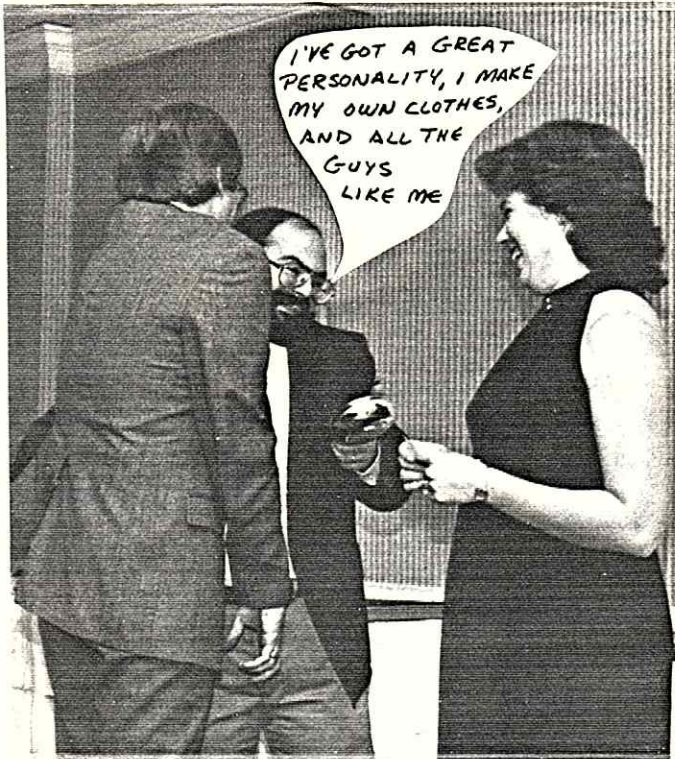
Next time : Equipment and Preparation.



THE REAL BUFFET TABLE



**Create Your Own Caption Contest
Printable Replies Next Month:**

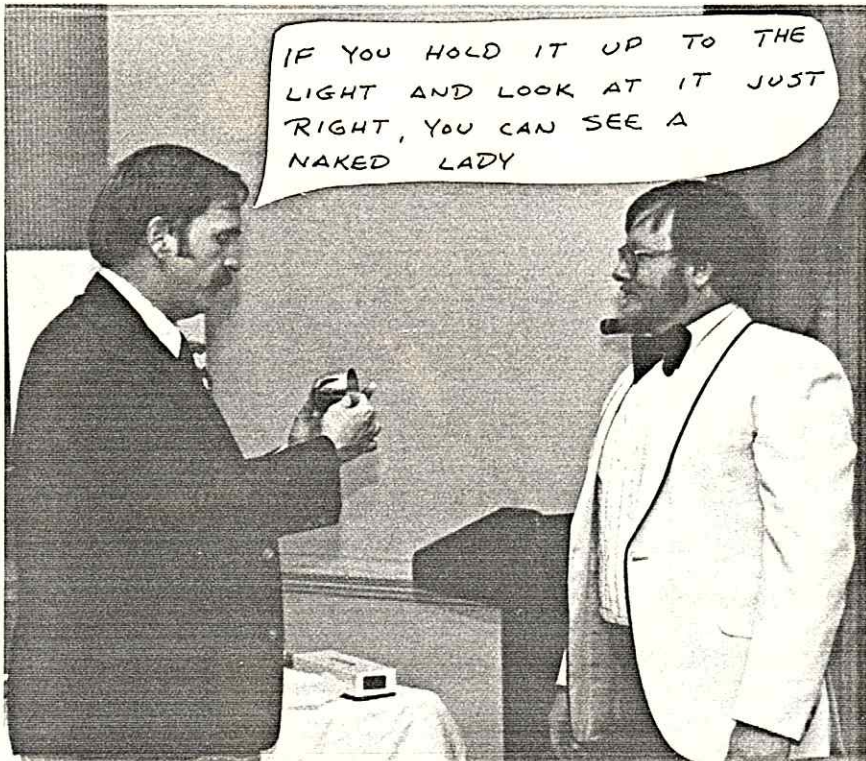


THE MORNING AFTER...

But what a great night!!! Although I'm still recovering from last night's Annual Awards Banquet, I just wanted to let you know what a terrific time it was.

The Cocktail Hour gave everyone a chance to say hello and compliment the beautiful dresses & gowns and snappy suits & tuxs. After an hour of socializing and talking over the good times of '85 dinner was served. The food was wonderful - Steamship round, ham, seafood over rice, boiled taters, yams, green beans, crisp salad, fresh vegies and jello with fruit. All was served on silver trays. And, oh the pies! We enjoyed our meal at candle-lit tables with linen covers and napkins in a beautiful dinning room. Attentive waitresses seeing to our needs. The tables were cleared and with full tummies we honored our fellow members for their accomplishments in '85. Beautiful Pewter awards were presented, Life membership awarded and it finished with a standing ovation for Neale. Ah, but the night was still young! Sounds of the band tuning up drifted in from the dance area. With anticipation the bar was visited and small groups of conversation began. By the 3rd song the dance floor was full! 'Flashback' was once again providing the best live music in town. It was time to Boogie Down and boogie we did for the next four hours! Off came high-heeled shoes, suit jackets and cumberbuns. Talk of competition, classing systems and old rally traps suffered as EVERYONE (even those you'd never expect) hit the dance floor. Today, phrases like 'hurts in places God didn't know I had' are crossing my mind. But last night my senses were dulled by the excitement of the Annual Awards Banquet. I had no worries or cares. It was an incredible evening!!! For those who couldn't make it...you missed a helluva good time. And we missed you. But there's always next year. Thanks Shelia, for a wonderful evening.

Yours in the misery of The Morning After,
Beth





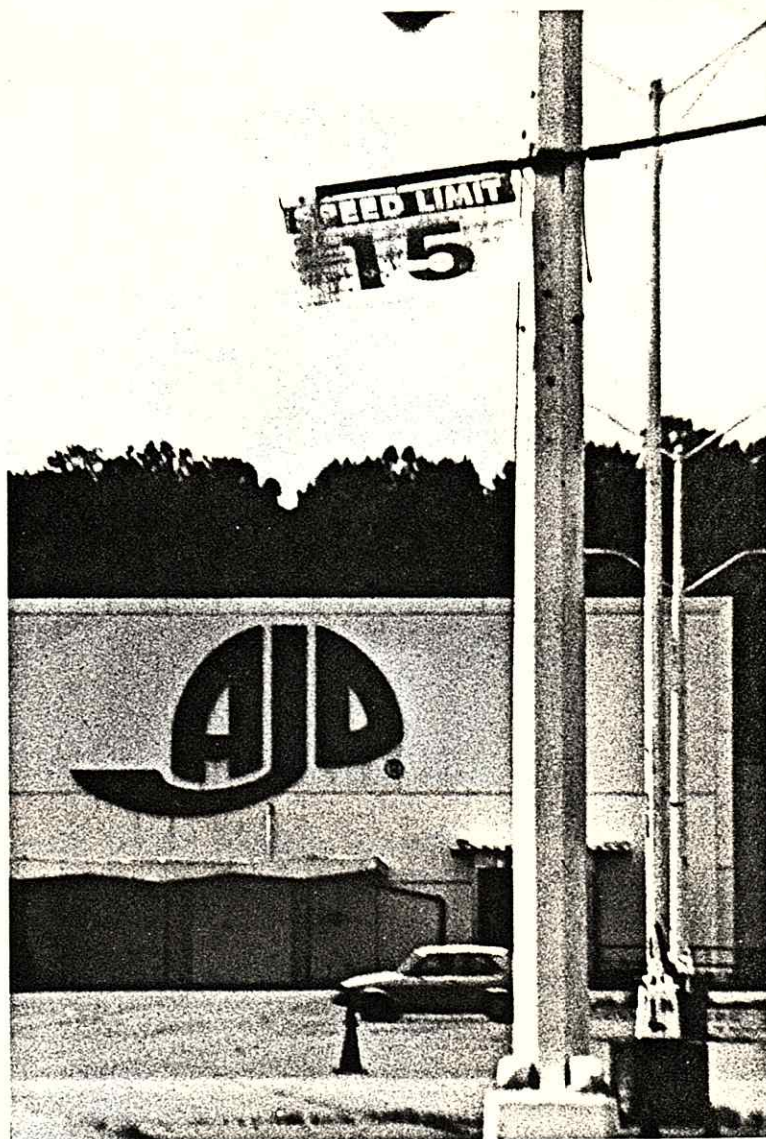
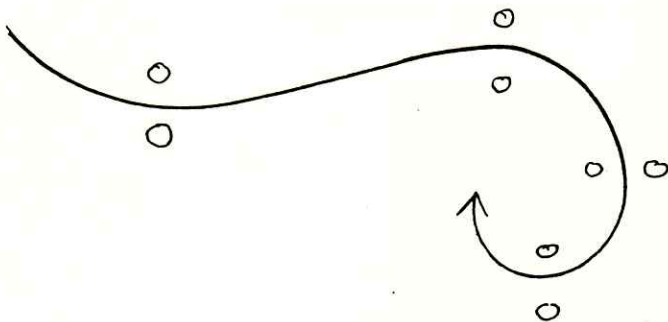
Once again, Wilt Greenwood wins VMSC's annual tribute to garish trophy design





PRESENTS...

LEARNING CURVES -
... all over again...



A PRACTICE AUTOCROSS - NO CLASSES - NO TROPHIES - NO POINTS

MARCH 23, 1986 - AJD PARKING LOT, CASTLEWOOD RD. OFF JEFF DAVIS HWY.

UNLIMITED RUNS FROM 9:30 to 5:00 - TWO COURSES (AM. & PM.)

LIMIT 30 ENTRIES - PAID PRE-REGISTRATION \$15.00 - \$20.00 DAY OF EVENT
TEAMS OF 2 OR MORE DRIVERS PER CAR PAY \$15.00 TO ENTER CAR, \$5.00 PER
EXTRA DRIVER.

PRE-REGISTRATION AND INFO:

RICHARD WEST, 4210 CEDARDALE LN. RICHMOND, VA. 23234, 271-8424, 7 -10 PM.

DOUG BURTON, 4120 J TOWNHOUSE RD. RICHMOND, VA. 23228, 262-6898

OFFICIAL USE	
EVENT _____	_____
CLASS _____	_____
CAR NUMBER _____	_____

1986
Eighth Annual
WALTER MITTY CHALLENGE
BENETT HISTORIC RACES

Public Admission
 Per person

3 day weekend	\$20
Friday	\$10
Saturday	\$10
Sunday	\$15

ENTRY FORM



April 25 - 27, 1986



Road Atlanta, Braselton, GA

➔ Largest and fastest growing event for vintage/historic racing and high performance contemporary sports cars. ←

Attended before: No Yes. Previous Road Atlanta Laptime: _____

ENTRANT NAME: _____ DRIVER: _____

ADDRESS: _____
Street City State Zip Code

PHONE NO. (Home) () _____ (Office) () _____

ENTRY: MAKE _____ MODEL _____ YEAR _____

COLOR/DESCRIPTION: _____

ENGINE DISPL/CYCLS: _____ CARBURETION: _____

TIRE MANUF.: _____ TYPE: RACING _____ STREET _____ TREADED/SLICK _____

FRONT TIRE SIZE: _____ TREAD WIDTH: _____ / REAR TIRE SIZE: _____ TREAD WIDTH: _____

ROLL BAR: Yes No

VINTAGE / HISTORIC ENTRANT

Driver's Competition License / History:

***SPORTS ENTRANT**

● Rim Width: Front _____ Rear _____

● Engine Modifications _____

● Suspension Modifications _____

CAR NUMBER PREFERENCE

1st Choice _____

2nd Choice _____

3rd Choice _____

***Sports Class Safety Requirements:**

- Snell approved helmet (1975 or later)
- Face shield on driver's helmet for open cars
- Full length driving suit (Nomex recommended)
- Leather or Nomex shoes with socks . . . no canvas, nylon, etc.
- Full coverage leather or Nomex gloves
- Four-point seat belt harness
- Roll bar required for open cars
- Fire extinguisher recommended

ENTRY FEES COVER ALL THREE DAYS

Choice	Class	Cost per car			Limited To Number of Entrants
		Includes Driver Plus: (Crew)	Non-Members	*WMC Members	
<input type="checkbox"/>	Vintage/Historic racing	3	\$150	\$130	100
<input type="checkbox"/>	Competition Exhibition	3	\$150	\$130	50
<input type="checkbox"/>	Sports Run	1	\$120	\$100	100
<input type="checkbox"/>	Touring	—	\$ 60	\$ 40	80
<input type="checkbox"/>	Concours	—	\$ 35	\$ 15	Open
<input type="checkbox"/>	Driving School (April 25th)	—	\$375	\$325	30

*Plus annual membership fee of \$20.00

Due to administrative considerations, cancellations cannot be accepted after April 15, 1986.

WALTER MITTY CHALLENGE GROUP Membership \$20 annually. All members given priority for entrance choice. The cost of providing this event cannot permit a refund in case of inclement weather or other conditions out of our control. Entries must be received no later than April 1, 1986. Late entry fee \$25.



All checks payable to Walter Mitty Challenge, P.O. Box 2263, Roswell, GA 30077-2263, (612) 471-0497 or (404) 231-3455
 Road Atlanta (404) 967-6143 or 881-8233



VIRGINIA MOTOR SPORT CLUB, INC.
P.O. BOX 25822
RICHMOND, VIRGINIA 23260-5822

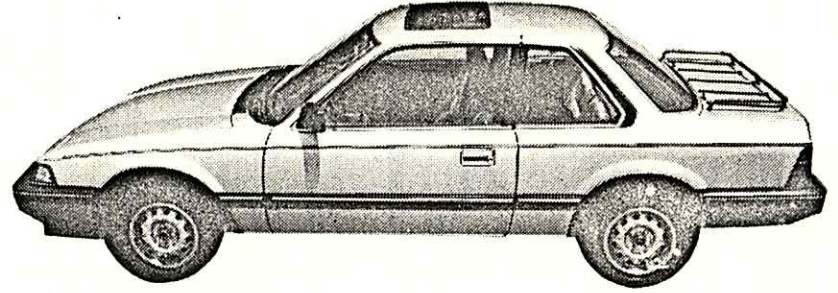
CHECKPOINTS is the monthly publication of the Virginia Motor Sport Club, Inc. It is mailed free to members. Subscriptions to non-dues paying parties are \$8.00 per year. Deadline for contributions to the editors is the first Thursday of the month.

PRESIDENT:
EDITORS:

BETH MILLS
FLOYD MILLS
GARY STOUT

518 MT HERMON RD. ASHLAND, VA. 23005
518 MT. HERMON RD. ASHLAND, VA. 23005
1214 SANTA ROSA RD. RICHMOND, VA. 23229

The Art of
Performance



New Honda Prelude — with moon roof

CIVICS • ACCORDS • PRELUDES

Masterpieces in Style and Performance

Richmond Honda

7400 Midlothian Pike

Just West of Cloverleaf Mall

YOUR CIVIC MINDED DEALER

Your #1 **HONDA** Dealer

745-0300